

bourdon tube test gauges
all stainless steel construction
class 0,6%
DS 6" (150mm)



PED 2014/68/UE

These instruments are designed for laboratories, instrument testing or recalibration facilities, and for all applications where accuracy and repeatability are of primary importance. They are suitable for use with low-viscosity fluids or gases that do not crystallize. The wetted parts in AISI 316L stainless steel make them ideal for use in harsh operating conditions caused by aggressive environments or process fluids.

Upon request, a calibration certificate issued by a laboratory officially accredited by ACCREDIA (formerly S.I.T. - Italian Calibration Service) is available.

1.15.1 - Standard Model

Design: EN837-1.

Safety designation: S1 as per EN 837-2.

Accuracy class: 0,6 as per EN 837-1.

Ambient temperature: -13...+149 °F (-25...+65 °C).

Process fluid temperature: -40...+302°F (-40...+150 °C).

Calibration temperature: 68°F (+20 °C).

Thermal drift: ±0,4 %/10 K of range (starting from 68°F - 20°C).

Working pressure: max 75% of FSV.

Overpressure limit: 30% of FSV.

Protection degree: IP 55 as per IEC 529.

Socket material: AISI 316L st.st.

Bourdon tube: AISI 316L st.st. seamless tube.

Case: stainless steel.

Ring: stainless steel, bayonet lock.

Window: tempered glass.

Movement: stainless steel with internal limit stops for minimum and maximum pressure.

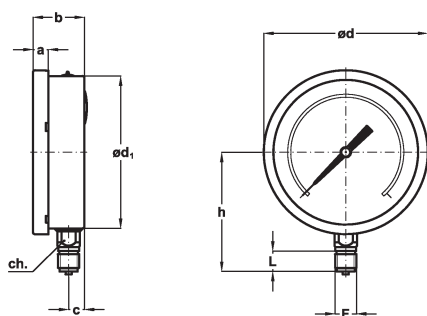
Dial: aluminium, white with black markings and anti-parallax mirror band.

Pointer: adjustable, aluminium, black, knife-edge micrometer.

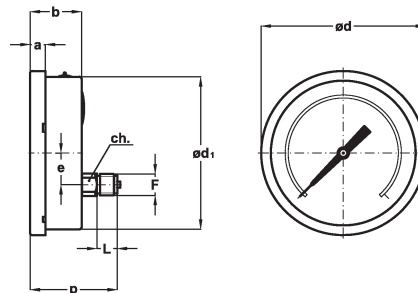
RANGE	Minor graduation	Figure interval	bar	kPa	MPa	psi
-1...0	0,005	0,10	◆			
0...0,6	0,002	0,05	◆		◆	
0...1	0,005	0,1	◆		◆	
0...1,6	0,005	0,1	◆		◆	
0...2,5	0,01	0,1	◆		◆	
0...4	0,02	0,2	◆		◆	
0...6	0,02	0,5	◆		◆	
0...10	0,05	1	◆		◆	◆
0...16	0,05	1	◆		◆	◆
0...25	0,1	1	◆		◆	
0...30	0,1	2	◆		◆	◆
0...40	0,2	2	◆		◆	
0...60	0,2	5	◆	◆	◆	◆
0...100	0,5	10	◆	◆		◆
0...160	0,5	10	◆	◆		◆
0...250	1	10	◆	◆		
0...300	1	20	◆	◆		◆
0...400	2	20	◆	◆		◆
0...600	2	50	◆	◆		◆
0...1000	5	100				◆
0...2000	10	100				◆
0...3000	10	200				◆
0...4000	20	200				◆
0...6000	20	500				◆

bourdon tube test gauges
all stainless steel construction, class 0,6%, DS 6" (150mm)

MN15



A - LOWER CONNECTION



D - BACK CONNECTION

Mounting	F	a	b	c	ød	ød ₁	e	h	p	ch	L	Weight
Lower	41M - G 1/2 A	0.59"	1.91"	1.98"	6.33"	5.88"		4.60"		0.86"	0.78"	2.07 lbs
	43M - 1/2-14 NPT	(15)	(50,5)	(15,5)	(161)	(149,6)		(117)		(22)	(20)	(0,94 kg)
Back	41M - G 1/2 A	0.59"	1.91"		6.33"	5.88"	1.22"		3.36"	0.86"	0.78"	2.07 lbs
	43M - 1/2-14 NPT	(15)	(50,5)		(161)	(149,6)	(31)		(85,5)	(22)	(20)	(0,94 kg)

dimensions : inches (mm)

PRESSURE GAUGE CARRYING CASE



Instruments with radial connection can be supplied provided with a pressure gauge carrying case, codE **5VAL**.

OPTIONS

B -	"U"-clamp, for back connection pressure gauges
C -	Back flange, for lower connection pressure gauges
E -	Front flange, for back connection pressure gauges
CE1 -	ACCREDIA certificate (pressure gauges)
CE3 -	ACCREDIA certificate (vacuum gauges)
T32 -	Safety glass window

"HOW TO ORDER" SEQUENCE

Section / Model / Case / Mounting / Diameter / Range / Process connection / Options
1 15 1 A G 41M B...E
D 43M CE1...T32

